



**Water Monitoring Result at M5B - Central Cooling Water Intake Group
Mid-Flood Tide**

Date	Time	Weather Condition	Sampling Depth m	Water Temperature °C			pH			Salinity ppt			DO Saturation %			DO mg/L		Turbidity NTU			Suspended Solids mg/L			
				Value	Average		Value	Average		Value	Average		Value	Average		Value	Average	Value	Average	Value	Average	Value	Average	
3/11/14	15:10	Cloudy	Middle	3.5	25.60	25.60	25.60	7.99	7.99	7.99	33.34	33.34	33.35	81.1	81.3	80.4	5.49	5.51	5.45	5.74	5.75	5.75	4	4.00
	15:12		Middle	3.5	25.60	25.60		7.99	7.99		33.35	33.35		79.9	79.4		5.41	5.38		5.76	5.76		4	
5/11/14	16:45	Fine	Middle	3.0	25.50	25.50	25.50	7.96	7.96	7.98	32.67	32.67	32.65	86.0	81.5	81.0	5.85	5.55	5.52	5.29	5.34	5.36	5	5.00
	16:47		Middle	3.0	25.50	25.50		7.99	7.99		32.62	32.63		78.1	78.3		5.32	5.35		5.37	5.45		5	
7/11/14	16:50	Cloudy	Middle	3.5	25.00	25.00	24.95	8.05	8.05	8.06	32.52	32.52	32.38	73.8	73.7	73.3	5.07	5.06	5.03	4.53	4.53	4.53	3	3.00
	16:52		Middle	3.5	24.90	24.90		8.06	8.06		32.24	32.24		73.0	72.6		5.01	4.98		4.53	4.53		3	
10/11/14	10:15	Fine	Middle	3.0	24.80	24.80	24.75	8.03	8.03	8.04	33.29	33.29	33.26	100.3	106.6	103.5	6.90	7.33	7.19	12.38	12.37	12.38	19	<u>19.50</u>
	10:17		Middle	3.0	24.70	24.70		8.05	8.05		33.22	33.22		104.1	102.8		7.15	7.37		12.37	12.38		20	
12/11/14	10:37	Fine	Middle	3.0	25.80	25.80	25.85	8.00	8.00	8.01	33.12	33.12	33.12	85.7	85.7	85.0	5.78	5.78	5.74	4.19	4.15	4.16	10	11.00
	10:39		Middle	3.0	25.90	25.90		8.02	8.02		33.12	33.12		84.2	84.4		5.68	5.70		4.14	4.14		12	
14/11/14	17:10	Fine	Middle	4.0	23.90	23.90	23.90	8.05	8.05	8.06	33.07	33.07	33.13	81.8	81.6	81.9	5.70	5.70	5.72	3.19	3.16	3.22	5	5.00
	17:12		Middle	4.0	23.90	23.90		8.06	8.06		33.18	33.18		82.1	82.2		5.73	5.73		3.25	3.27		<2	
17/11/14	13:35	Fine	Middle	3.0	25.30	25.30	25.45	8.08	8.08	8.10	32.21	32.21	32.34	89.6	89.5	89.0	6.06	6.05	6.04	3.03	3.05	3.10	4	4.00
	13:37		Middle	3.0	25.60	25.60		8.11	8.11		32.46	32.46		88.0	89.0		5.99	6.05		3.16	3.17		4	
19/11/14	15:10	Fine	Middle	3.0	24.30	24.30	24.35	8.12	8.12	8.13	31.48	31.48	31.32	95.0	94.6	93.8	6.62	6.56	6.48	2.82	2.80	2.80	4	3.50
	15:12		Middle	3.0	24.40	24.40		8.14	8.14		31.15	31.15		91.2	94.3		6.31	6.43		2.79	2.79		3	
21/11/14	16:31	Fine	Middle	3.0	24.00	24.00	24.00	8.04	8.04	8.06	33.05	33.05	33.11	98.8	97.8	98.0	6.86	6.82	6.82	3.32	3.30	3.24	5	5.50
	16:33		Middle	3.0	24.00	24.00		8.07	8.07		33.17	33.17		97.8	97.7		6.81	6.80		3.17	3.17		6	
24/11/14	8:40	Fine	Middle	2.5	23.60	23.60	23.60	8.19	8.19	8.20	33.05	33.05	33.07	90.4	91.7	91.2	6.32	6.41	6.37	3.24	3.24	3.24	3	3.00
	8:42		Middle	2.5	23.60	23.60		8.20	8.20		33.08	33.08		91.7	90.8		6.41	6.35		3.25	3.24		3	
26/11/14	10:10	Fine	Middle	3.5	23.90	23.90	23.90	8.14	8.14	8.16	31.54	31.54	31.56	89.8	89.9	89.6	6.32	6.33	6.32	2.58	2.57	2.57	5	4.50
	10:12		Middle	3.5	23.90	23.90		8.17	8.17		31.57	31.57		90.7	88.0		6.44	6.18		2.57	2.57		4	
28/11/14	10:19	Cloudy	Middle	3.0	23.70	23.70	23.70	8.15	8.15	8.16	33.55	33.55	33.06	86.5	87.3	87.0	6.01	6.06	6.07	3.94	3.92	3.92	4	4.00
	10:21		Middle	3.0	23.70	23.70		8.16	8.16		32.56	32.56		87.3	86.7		6.11	6.08		3.92	3.91		4	

Remarks:
Single underline denotes exceedance over Action Level.
Double underline denotes exceedance over Limit Level.



**Water Monitoring Result at M5B - Central Colling Water Intake Group
Mid-Ebb Tide**

Date	Time	Weather Condition	Sampling Depth		Water Temperature			pH			Salinity			DO Saturation			DO			Turbidity			Suspended Solids	
					°C		-		ppt		%		mg/L		NTU		mg/L							
					Value	Average	Value	Average	Value	Average	Value	Average	Value	Average	Value	Average	Value	Average	Value	Average				
3/11/14	9:50	Fine	Middle	3.5	25.00	25.00	25.00	7.92	7.92	7.94	33.44	33.44	33.46	94.6	94.4	93.4	6.47	6.46	6.40	8.72	8.74	8.82	6	6.00
	9:52		Middle	3.5	25.00	25.00		7.95	7.95		33.47	33.47		92.8	91.9		6.36	6.30		8.89	8.92		6	
5/11/14	10:45	Fine	Middle	3.0	25.60	25.60	25.60	8.00	8.00	8.01	33.30	33.30	33.45	86.1	86.0	85.4	5.82	5.81	5.77	4.13	4.13	4.14	2	2.50
	10:47		Middle	3.0	25.60	25.60		8.01	8.01		33.59	33.59		85.3	84.1		5.76	5.68		4.14	4.14		3	
7/11/14	11:16	Cloudy	Middle	3.0	25.10	25.10	25.10	8.16	8.16	8.16	33.49	33.49	33.51	82.8	83.2	83.2	5.65	5.71	5.69	3.91	3.87	3.88	4	4.00
	11:17		Middle	3.0	25.10	25.10		8.16	8.16		33.52	33.52		83.9	83.0		5.74	5.66		3.85	3.87		4	
10/11/14	4:40	Cloudy	Middle	3.0	23.76	23.76	23.77	7.96	7.96	8.00	32.10	32.10	32.11	99.5	96.0	95.5	7.28	7.03	6.93	4.00	3.45	3.70	<2	<2
	4:41		Middle	3.0	23.77	23.77		8.02	8.04		32.11	32.11		93.4	93.2		6.72	6.70		3.51	3.85		<2	
12/11/14	5:10	Cloudy	Middle	3.0	24.05	24.05	24.05	8.13	8.13	8.14	30.82	30.84	30.86	99.7	99.8	99.6	7.29	7.30	7.28	2.88	2.91	2.80	3	3.50
	5:11		Middle	3.0	24.05	24.05		8.14	8.14		30.88	30.88		99.5	99.3		7.27	7.25		2.77	2.63		4	
14/11/14	5:05	Cloudy	Middle	3.0	22.50	22.50	22.49	8.34	8.35	8.35	32.25	32.27	32.26	99.3	99.4	99.2	7.12	7.13	7.11	1.33	1.28	1.36	<2	<2
	5:06		Middle	3.0	22.48	22.48		8.35	8.35		32.26	32.26		99.0	98.9		7.09	7.09		1.26	1.56		<2	
17/11/14	10:19	Fine	Middle	3.0	24.50	24.50	24.65	8.08	8.08	8.09	32.62	32.62	32.64	80.3	79.6	79.6	5.54	5.56	5.50	4.81	4.98	4.73	4	3.50
	10:21		Middle	3.0	24.80	24.80		8.10	8.10		32.66	32.66		79.4	79.0		5.48	5.40		4.56	4.55		3	
19/11/14	10:30	Fine	Middle	3.5	23.90	23.90	23.90	8.12	8.12	8.13	33.24	33.24	33.25	93.7	94.1	94.0	6.54	6.57	6.56	2.52	2.47	2.48	3	3.00
	10:32		Middle	3.5	23.90	23.90		8.14	8.14		33.25	33.25		94.0	94.0		6.56	6.56		2.46	2.46		3	
21/11/14	11:50	Fine	Middle	3.0	24.40	24.40	24.40	8.16	8.16	8.17	33.26	33.26	33.26	94.7	96.3	95.3	6.54	6.66	6.59	2.94	2.94	2.94	3	3.00
	11:52		Middle	3.0	24.40	24.40		8.17	8.17		33.26	33.26		95.3	94.9		6.58	6.56		2.94	2.95		3	
24/11/14	3:59	Fine	Middle	3.0	23.08	23.08	23.08	8.16	8.16	8.17	32.11	32.12	32.14	93.1	92.8	92.7	6.75	6.73	6.73	2.46	2.26	2.45	<2	<2
	4:00		Middle	3.0	23.07	23.07		8.17	8.17		32.17	32.17		92.5	92.5		6.71	6.71		2.49	2.59		<2	
26/11/14	5:16	Cloudy	Middle	3.0	22.50	22.50	22.50	7.82	7.82	7.86	31.84	31.84	31.86	85.8	83.8	83.2	6.22	6.07	6.01	4.64	4.87	4.38	4	4.00
	5:17		Middle	3.0	22.50	22.50		7.89	7.89		31.88	31.88		82.2	80.8		5.95	5.80		4.00	4.02		4	
28/11/14	4:55	Cloudy	Middle	3.0	22.82	22.82	22.87	8.06	8.07	8.07	31.74	31.74	31.81	96.0	96.0	95.5	7.19	7.19	7.16	1.89	1.93	1.85	3	3.00
	4:56		Middle	3.0	22.92	22.92		8.08	8.08		31.88	31.88		95.1	95.0		7.13	7.11		1.80	1.77		3	

Remarks:
Single underline denotes exceedance over Action Level.
Double underline denotes exceedance over Limit Level.



**Water Monitoring Result at M5B - Central Cooling Water Intake Group
Mid-Flood Tide**

Date	Time	Weather Condition	Sampling Depth		Water Temperature			pH			Salinity			DO Saturation		DO		Turbidity		Suspended Solids				
					°C			-			ppt			%		mg/L		NTU		mg/L				
			m	Value	Average	Value	Average	Value	Average	Value	Average	Value	Average	Value	Average	Value	Average	Value	Average	Value	Average	Value	Average	
1/12/14	14:15	Cloudy	Middle	3.0	22.40	22.40	22.40	8.12	8.12	8.13	32.16	32.16	32.18	88.5	88.7	88.7	6.38	6.39	6.39	5.49	5.37	5.37	7	7.00
	14:17		Middle	3.0	22.40	22.40		8.13	8.13		32.19	32.19		89.2	88.4		6.42	6.37		5.30	5.30		7	
3/12/14	14:57	Cloudy	Middle	3.0	22.00	22.00	21.95	8.14	8.14	8.14	32.19	32.19	32.20	84.2	84.1	83.8	6.11	6.11	6.08	4.01	4.01	4.02	5	4.00
	14:59		Middle	3.0	21.90	21.90		8.14	8.14		32.20	32.20		83.6	83.1		6.07	6.04		4.02	4.04		3	
5/12/14	16:10	Fine	Middle	3.5	20.80	20.80	20.70	8.20	8.20	8.20	32.19	32.19	32.20	83.1	83.8	83.5	6.17	6.22	6.20	2.85	2.83	2.86	4	3.50
	16:12		Middle	3.5	20.60	20.60		8.19	8.19		32.21	32.21		83.7	83.4		6.22	6.20		2.84	2.91		3	
8/12/14	10:20	Fine	Middle	3.0	20.70	20.70	20.65	8.17	8.17	8.17	32.17	32.17	32.18	82.8	81.8	80.8	6.16	6.08	6.01	3.00	3.00	2.99	3	3.00
	10:22		Middle	3.0	20.60	20.60		8.17	8.17		32.19	32.19		80.5	77.9		5.99	5.79		2.99	2.96		3	
10/12/14	8:30	Cloudy	Middle	3.0	20.60	20.60	20.55	8.19	8.19	8.19	32.34	32.34	32.30	84.9	84.4	85.1	6.32	6.28	6.34	3.51	3.43	3.45	5	4.50
	8:32		Middle	3.0	20.50	20.50		8.19	8.19		32.25	32.25		85.6	85.5		6.37	6.37		3.43	3.43		4	
12/12/14	10:45	Fine	Middle	3.0	19.50	19.50	19.50	8.20	8.20	8.20	32.14	32.14	32.14	82.4	84.0	83.7	6.27	6.39	6.38	3.53	3.60	3.59	3	3.50
	10:47		Middle	3.0	19.50	19.50		8.20	8.20		32.14	32.14		84.8	83.6		6.48	6.37		3.64	3.60		4	
15/12/14	12:45	Fine	Middle	3.5	20.30	20.30	20.30	8.17	8.17	8.17	32.04	32.04	32.04	82.1	81.9	82.1	6.14	6.13	6.14	8.97	8.96	8.94	3	2.50
	12:47		Middle	3.5	20.30	20.30		8.17	8.17		32.04	32.04		82.2	82.1		6.15	6.14		8.96	8.88		2	
17/12/14	11:50	Fine	Middle	3.0	18.20	18.20	18.15	8.21	8.21	8.22	31.89	31.89	31.90	86.9	86.9	87.4	6.72	6.72	6.79	4.02	4.01	4.01	<2	2.00
	11:52		Middle	3.0	18.10	18.10		8.22	8.22		31.91	31.91		88.1	87.7		6.88	6.85		4.00	4.00		2	
19/12/14	16:10	Cloudy	Middle	3.0	18.00	18.00	17.90	8.24	8.24	8.26	31.91	31.91	31.92	88.3	88.4	88.7	6.93	6.94	6.96	3.08	3.11	3.12	4	4.00
	16:12		Middle	3.0	17.80	17.80		8.27	8.27		31.92	31.92		88.8	89.2		6.97	6.99		3.13	3.16		4	
22/12/14	8:43	Fine	Middle	3.5	16.40	16.40	16.35	8.27	8.27	8.27	31.67	31.67	31.68	83.9	85.4	84.8	6.79	6.91	6.87	3.55	3.52	3.49	<2	<2
	8:45		Middle	3.5	16.30	16.30		8.27	8.27		31.68	31.68		85.2	84.7		6.90	6.86		3.47	3.42		<2	
24/12/14	10:40	Fine	Middle	3.0	19.00	19.00	19.05	8.22	8.22	8.22	31.76	31.76	31.76	87.2	86.9	87.2	6.70	6.67	6.70	3.04	3.04	3.04	4	4.50
	10:42		Middle	3.0	19.10	19.10		8.22	8.22		31.76	31.76		87.4	87.3		6.71	6.70		3.04	3.03		5	
26/12/14	7:35	Cloudy	Middle	3.0	18.10	18.10	18.10	8.01	8.01	8.01	31.54	31.54	31.55	76.4	76.8	76.9	6.09	6.11	6.13	1.58	1.54	1.69	<2	<2
	7:36		Middle	3.0	18.10	18.10		8.01	8.01		31.55	31.55		77.2	77.3		6.15	6.16		1.60	2.02		<2	
29/12/14	13:55	Fine	Middle	3.0	18.00	18.00	18.05	8.20	8.20	8.20	31.53	31.53	31.54	82.0	83.2	83.6	6.42	6.51	6.55	2.80	2.81	2.81	3	2.50
	13:57		Middle	3.0	18.10	18.10		8.20	8.20		31.54	31.54		83.9	85.3		6.61	6.67		2.81	2.80		2	
31/12/14	11:40	Fine	Middle	3.0	18.10	18.10	18.10	8.11	8.11	8.12	31.60	31.60	31.61	77.7	78.2	78.1	6.07	6.11	6.10	6.01	6.08	6.03	6	6.50
	11:42		Middle	3.0	18.10	18.10		8.12	8.12		31.61	31.61		78.2	78.1		6.11	6.11		6.02	6.02		7	

Remarks:
Single underline denotes exceedance over Action Level.
Double underline denotes exceedance over Limit Level.



**Water Monitoring Result at M5B - Central Colling Water Intake Group
Mid-Ebb Tide**

Date	Time	Weather Condition	Sampling Depth		Water Temperature			pH			Salinity			DO Saturation			DO			Turbidity			Suspended Solids	
					°C		-		ppt		%		mg/L		NTU		mg/L							
					Value	Average	Value	Average	Value	Average	Value	Average	Value	Average	Value	Average	Value	Average	Value	Average				
1/12/14	21:36	Cloudy	Middle	3.0	22.30	22.30	22.30	7.63	7.63	7.64	31.60	31.60	31.61	94.3	92.2	93.0	8.12	7.94	8.01	9.53	9.21	9.25	2	3.00
	21:37		Middle	3.0	22.30	22.30		7.64	7.64		31.61	31.61		92.8	92.6		7.99	7.97		9.15	9.10		4	
3/12/14	10:05	Cloudy	Middle	3.0	21.60	21.60	21.55	8.19	8.19	8.19	32.25	32.25	32.26	88.5	87.6	88.0	6.47	6.40	6.43	3.29	3.29	3.29	3	3.00
	10:07		Middle	3.0	21.50	21.50		8.19	8.19		32.27	32.27		87.6	88.3		6.40	6.45		3.28	3.29		3	
5/12/14	10:40	Cloudy	Middle	3.0	20.30	20.30	20.20	8.21	8.21	8.22	32.21	32.21	32.23	90.4	90.8	89.8	6.78	6.80	6.73	4.02	4.00	3.98	4	4.00
	10:42		Middle	3.0	20.10	20.10		8.22	8.22		32.25	32.25		89.3	88.5		6.70	6.64		4.00	3.91		4	
8/12/14	1:36	Cloudy	Middle	3.0	19.60	19.60	19.60	8.03	8.03	8.04	31.57	31.57	31.58	93.1	93.8	93.4	7.08	7.14	7.11	5.34	5.68	5.59	3	3.00
	1:37		Middle	3.0	19.60	19.60		8.05	8.05		31.58	31.58		93.2	93.5		7.09	7.11		5.73	5.60		3	
10/12/14	5:15	Cloudy	Middle	3.0	20.20	20.20	20.20	7.63	7.64	7.64	32.41	32.41	32.41	93.5	92.2	93.1	7.03	6.93	6.91	2.32	2.44	2.47	2	2.00
	5:16		Middle	3.0	20.20	20.20		7.64	7.64		32.40	32.40		94.3	92.5		7.09	6.59		2.84	2.26		2	
12/12/14	3:31	Cloudy	Middle	3.0	19.30	19.30	19.35	8.01	8.01	8.02	31.90	31.90	31.91	93.5	94.2	93.8	7.12	7.18	7.15	1.74	1.94	1.85	5	5.50
	3:32		Middle	3.0	19.40	19.40		8.03	8.03		31.91	31.91		93.9	93.6		7.16	7.14		1.88	1.84		6	
15/12/14	6:52	Cloudy	Middle	3.0	19.00	19.00	19.00	7.92	7.92	7.93	32.16	32.16	32.16	90.5	91.0	91.4	6.94	6.99	7.01	1.86	1.52	1.63	<2	<2
	6:53		Middle	3.0	19.00	19.00		7.94	7.94		32.16	32.16		91.7	92.3		7.04	7.07		1.49	1.66		<2	
17/12/14	20:56	Fine	Middle	3.0	16.20	16.20	16.15	7.95	7.95	7.97	31.99	31.99	32.01	94.4	94.9	94.5	7.65	7.69	7.66	2.76	2.96	2.81	<2	<2
	20:57		Middle	3.0	16.10	16.10		8.00	7.99		32.03	32.03		94.0	94.8		7.61	7.68		2.79	2.74		<2	
19/12/14	21:17	Cloudy	Middle	3.0	13.30	13.30	13.20	7.85	7.85	7.87	31.95	31.95	31.95	94.5	94.9	95.1	7.50	7.55	7.56	2.80	2.60	2.56	3	3.00
	21:18		Middle	3.0	13.10	13.10		7.89	7.89		31.95	31.95		95.5	95.6		7.58	7.60		2.49	2.34		3	
22/12/14	2:09	Cloudy	Middle	3.0	15.60	15.60	15.58	7.94	7.94	7.95	31.85	31.85	31.85	95.8	96.5	96.2	7.87	7.92	7.90	4.49	4.62	4.57	2	2.00
	2:10		Middle	3.0	15.50	15.60		7.95	7.95		31.84	31.84		96.4	96.1		7.92	7.89		4.60	4.57		<2	
24/12/14	3:05	Cloudy	Middle	3.0	17.60	17.60	17.55	7.82	7.82	7.83	30.25	30.25	30.45	89.9	90.1	89.6	7.16	7.18	7.13	2.44	2.38	2.40	3	3.00
	3:06		Middle	3.0	17.50	17.50		7.83	7.84		30.64	30.64		89.3	89.1		7.10	7.09		2.53	2.26		3	
26/12/14	1:20	Cloudy	Middle	3.5	17.20	17.20	17.20	7.97	7.97	7.97	31.65	31.65	31.65	94.4	94.6	94.1	7.50	7.52	7.47	2.48	2.50	2.52	4	4.00
	1:21		Middle	3.5	17.20	17.20		7.97	7.97		31.64	31.64		94.0	93.2		7.46	7.41		2.58	2.52		4	
29/12/14	5:05	Cloudy	Middle	3.5	14.90	14.90	14.90	7.74	7.74	7.75	31.51	31.51	31.51	97.6	97.9	97.6	8.14	8.16	8.14	1.68	1.57	1.60	2	2.00
	5:06		Middle	3.5	14.90	14.90		7.75	7.75		31.51	31.51		97.7	97.2		8.15	8.11		1.55	1.60		2	
31/12/14	18:56	Fine	Middle	3.0	17.60	17.60	17.60	8.13	8.13	8.13	31.06	31.06	31.06	75.6	74.7	74.2	5.99	5.91	5.87	3.35	3.35	3.33	4	3.50
	18:58		Middle	3.0	17.60	17.60		8.11	8.13		31.06	31.06		73.6	72.9		5.81	5.77		3.30	3.32		3	

Remarks:
Single underline denotes exceedance over Action Level.
Double underline denotes exceedance over Limit Level.



**Water Monitoring Result at M5B - Central Cooling Water Intake Group
Mid-Flood Tide**

Date	Time	Weather Condition	Sampling Depth		Water Temperature			pH			Salinity		DO Saturation		DO		Turbidity		Suspended Solids					
					°C			-			ppt		%		mg/L		NTU		mg/L					
			m	Value	Average	Value	Average	Value	Average	Value	Average	Value	Average	Value	Average	Value	Average	Value	Average	Value	Average			
3/1/15	16:00	Fine	Middle	3.0	17.80	17.80	17.85	8.19	8.19	8.20	31.67	31.67	31.64	84.3	83.5	83.4	6.62	6.56	6.54	3.47	3.49	3.49	3	4.00
	16:02		Middle	3.0	17.90	17.90		8.20	8.20		31.61	31.61		83.4	82.4		6.54	6.45		3.49	3.51		5	
6/1/15	7:57	Fine	Middle	3.0	18.60	18.60	18.65	8.21	8.21	8.21	31.64	31.64	31.62	82.4	82.2	82.8	6.38	6.36	6.40	4.13	4.13	4.10	4	4.00
	7:59		Middle	3.0	18.70	18.70		8.21	8.21		31.60	31.60		83.5	83.0		6.45	6.42		4.10	4.05		4	
8/1/15	9:40	Fine	Middle	3.5	17.40	17.40	17.40	8.16	8.16	8.17	31.48	31.48	31.49	88.2	86.6	87.7	7.00	6.87	6.95	3.01	3.00	3.01	9	9.00
	9:42		Middle	3.5	17.40	17.40		8.17	8.17		31.49	31.49		87.4	88.4		6.93	7.01		3.01	3.03		9	
10/1/15	12:10	Fine	Middle	3.5	17.80	17.80	17.80	8.15	8.15	8.15	31.45	31.45	31.45	90.2	90.4	90.2	7.10	7.12	7.10	8.17	8.19	8.11	6	6.50
	12:12		Middle	3.5	17.80	17.80		8.15	8.15		31.45	31.45		90.9	89.2		7.16	7.03		8.08	7.99		7	
12/1/15	11:15	Fine	Middle	3.5	17.10	17.10	17.05	8.13	8.13	8.13	31.36	31.36	31.37	86.9	87.7	85.8	6.94	7.00	6.85	4.40	4.40	4.41	5	4.50
	11:17		Middle	3.5	17.00	17.00		8.13	8.13		31.37	31.37		83.7	84.7		6.69	6.77		4.41	4.42		4	
14/1/15	11:02	Fine	Middle	3.0	16.80	16.80	16.75	7.62	7.62	7.63	31.70	31.70	31.71	84.0	83.1	83.1	6.79	6.68	6.68	3.99	3.98	3.98	4	4.00
	11:04		Middle	3.0	16.70	16.70		7.63	7.63		31.72	31.72		82.7	82.4		6.64	6.61		3.98	3.97		4	
16/1/15	13:55	Fine	Middle	3.5	18.90	18.90	18.90	8.12	8.12	8.12	31.16	31.16	31.15	90.7	90.3	90.4	7.00	6.96	6.96	3.04	3.00	2.97	4	4.00
	13:57		Middle	3.5	18.90	18.90		8.12	8.12		31.14	31.14		90.3	90.2		6.95	6.94		2.95	2.89		4	
19/1/15	15:00	Fine	Middle	3.0	17.90	17.90	18.05	8.03	8.03	8.03	31.01	31.01	31.00	84.9	84.2	83.9	6.67	6.61	6.64	4.25	4.23	4.17	5	5.00
	15:02		Middle	3.0	18.20	18.20		8.02	8.02		30.99	30.99		82.9	83.4		6.61	6.65		4.10	4.10		5	
21/1/15	17:14	Fine	Middle	3.5	17.70	17.70	17.75	8.03	8.03	8.03	31.19	31.19	31.18	82.3	81.1	81.1	6.49	6.40	6.40	7.56	7.57	7.63	7	7.50
	17:16		Middle	3.5	17.80	17.80		8.03	8.03		31.17	31.17		80.9	80.1		6.37	6.32		7.58	7.79		8	
23/1/15	8:30	Fine	Middle	3.5	16.60	16.60	16.55	8.07	8.07	8.08	31.20	31.20	31.21	88.0	88.5	88.2	7.12	7.16	7.13	6.71	6.70	6.70	6	6.50
	8:32		Middle	3.5	16.50	16.50		8.08	8.08		31.21	31.21		88.2	87.9		7.14	7.11		6.68	6.69		7	
26/1/15	11:36	Fine	Middle	3.5	18.10	18.10	18.10	8.04	8.04	8.04	31.24	31.24	31.24	87.1	86.9	86.9	6.83	6.80	6.81	6.69	6.55	6.52	8	8.50
	11:38		Middle	3.5	18.10	18.10		8.04	8.04		31.24	31.24		86.7	86.9		6.79	6.80		6.42	6.41		9	
28/1/15	14:37	Fine	Middle	3.5	17.20	17.20	17.20	8.06	8.06	8.06	31.23	31.23	31.24	78.9	77.9	77.6	6.29	6.22	6.19	4.22	4.22	4.23	5	5.00
	14:39		Middle	3.5	17.20	17.20		8.06	8.06		31.24	31.24		77.0	76.4		6.14	6.10		4.23	4.25		5	
30/1/15	14:15	Fine	Middle	3.5	17.70	17.70	17.75	8.10	8.10	8.10	31.37	31.37	31.37	89.7	89.4	89.8	7.07	7.05	7.08	4.24	4.23	4.24	3	3.50
	14:17		Middle	3.5	17.80	17.80		8.10	8.10		31.37	31.37		90.3	89.9		7.11	7.08		4.23	4.24		4	

Remarks:
Single underline denotes exceedance over Action Level.
Double underline denotes exceedance over Limit Level.



**Water Monitoring Result at M5B - Central Colling Water Intake Group
Mid-Ebb Tide**

Date	Time	Weather Condition	Sampling Depth		Water Temperature			pH			Salinity			DO Saturation			DO			Turbidity			Suspended Solids	
					°C		-		ppt		%		mg/L		NTU		mg/L							
					Value	Average	Value	Average	Value	Average	Value	Average	Value	Average	Value	Average	Value	Average	Value	Average	Value	Average		
3/1/15	1:50	Cloudy	Middle	3.0	17.00	17.00	17.00	7.86	7.86	7.86	31.40	31.40	31.40	94.4	93.8	94.2	7.55	7.51	7.54	3.11	3.51	3.32	3	3.50
	1:51		Middle	3.0	17.00	17.00		7.86	7.86		31.40	31.40		94.5	94.2		7.56	7.53		3.46	3.18		4	
6/1/15	2:52	Fine	Middle	3.0	18.50	18.50	18.55	7.75	7.75	7.76	31.45	31.45	31.45	91.8	92.1	92.4	7.12	7.15	7.17	1.89	1.95	1.97	<2	<2
	2:53		Middle	3.0	18.60	18.60		7.76	7.76		31.44	31.44		92.6	93.1		7.19	7.23		1.98	2.04		<2	
8/1/15	1:55	Cloudy	Middle	3.0	17.10	17.10	17.10	7.82	7.82	7.83	31.48	31.48	31.48	88.9	89.9	88.8	7.18	7.22	7.12	2.27	2.12	2.13	2	2.50
	1:56		Middle	3.0	17.10	17.10		7.83	7.83		31.48	31.48		88.1	88.3		7.03	7.04		2.03	2.10		3	
10/1/15	3:05	Cloudy	Middle	3.5	16.40	16.40	16.40	7.89	7.89	7.90	31.43	31.43	31.44	92.6	95.3	94.1	7.55	7.71	7.63	1.90	1.85	1.97	3	3.00
	3:06		Middle	3.5	16.40	16.40		7.91	7.89		31.44	31.44		93.9	94.7		7.59	7.66		2.00	2.12		3	
12/1/15	4:10	Cloudy	Middle	3.0	17.10	17.10	17.10	7.86	7.86	7.87	31.33	31.33	31.34	92.7	92.9	92.9	7.40	7.43	7.42	2.24	2.21	2.15	2	2.00
	4:11		Middle	3.0	17.10	17.10		7.87	7.87		31.35	31.35		92.5	93.4		7.38	7.46		2.11	2.05		2	
14/1/15	18:58	Fine	Middle	3.5	15.50	15.50	15.50	7.91	7.9*1	7.94	31.20	31.20	31.20	93.8	95.7	94.6	7.74	7.90	7.81	4.22	4.19	4.18	5	4.50
	18:59		Middle	3.5	15.50	15.50		7.95	7.95		31.20	31.20		94.0	94.9		7.76	7.84		4.17	4.14		4	
16/1/15	19:32	Cloudy	Middle	3.5	17.30	17.30	17.30	7.83	7.83	7.84	30.83	30.78	30.97	96.5	98.0	96.3	7.69	7.80	7.67	4.40	4.43	4.37	4	4.00
	19:33		Middle	3.5	17.30	17.30		7.84	7.84		31.14	31.14		95.4	95.3		7.59	7.58		4.34	4.31		4	
19/1/15	1:47	Cloudy	Middle	3.0	15.70	15.70	15.70	7.91	7.91	7.91	30.75	30.76	30.78	85.3	86.0	86.1	7.01	7.08	7.08	5.25	5.41	5.25	7	6.50
	1:48		Middle	3.0	15.70	15.70		7.91	7.91		30.80	30.80		86.4	86.5		7.11	7.11		5.21	5.12		6	
21/1/15	11:45	Fine	Middle	3.0	17.30	17.30	17.35	8.09	8.09	8.09	31.21	31.21	31.21	89.9	90.6	90.4	7.15	7.20	7.18	6.40	6.39	6.44	6	6.50
	11:47		Middle	3.0	17.40	17.40		8.09	8.09		31.20	31.20		90.5	90.4		7.19	7.19		6.52	6.43		7	
23/1/15	14:15	Fine	Middle	3.5	17.60	17.60	17.70	8.04	8.04	8.04	31.25	31.25	31.24	87.8	88.3	88.1	6.93	6.97	6.95	3.58	3.57	3.59	5	5.00
	14:17		Middle	3.5	17.80	17.80		8.04	8.04		31.22	31.22		88.4	87.8		6.98	6.93		3.60	3.62		5	
26/1/15	16:20	Fine	Middle	3.0	18.10	18.10	18.10	8.00	8.00	8.00	31.24	31.24	31.24	82.2	83.6	83.3	6.44	6.54	6.52	6.05	6.05	6.07	4	5.00
	16:22		Middle	3.0	18.10	18.10		8.00	8.00		31.24	31.24		84.4	83.0		6.60	6.49		6.07	6.10		6	
28/1/15	20:03	Cloudy	Middle	3.5	17.10	17.10	17.10	7.86	7.86	7.86	31.22	31.22	31.33	96.0	96.1	96.6	7.51	7.52	7.56	2.86	2.97	2.84	3	3.00
	20:04		Middle	3.5	17.10	17.10		7.86	7.86		31.44	31.45		98.0	96.4		7.66	7.54		2.81	2.73		3	
30/1/15	21:45	Cloudy	Middle	3.5	17.20	17.20	17.20	8.00	8.00	8.00	31.52	31.52	31.52	96.5	95.3	96.4	7.68	7.57	7.66	4.31	4.21	4.21	3	2.50
	21:46		Middle	3.5	17.20	17.20		8.00	8.00		31.52	31.52		96.8	96.8		7.69	7.69		4.17	4.15		2	

Remarks:
Single underline denotes exceedance over Action Level.
Double underline denotes exceedance over Limit Level.



**Water Monitoring Result at Culvert J - Reference Station
Mid-Flood Tide**

Date	Time	Weather Condition	Sampling Depth m	Water Temperature °C			pH			Salinity ppt			DO Saturation %		DO mg/L		Turbidity NTU		Suspended Solids mg/L					
				Value	Average		Value	Average		Value	Average		Value	Average	Value	Average	Value	Average	Value	Average				
3/11/14	15:15	Cloudy	Middle	3.0	25.40	25.40	25.35	8.00	8.00	8.00	33.31	33.31	33.31	78.1	78.4	78.1	5.31	5.33	5.31	6.04	6.02	6.02	5	4.50
	15:17		Middle	3.0	25.30	25.30		8.00	8.00		33.31	33.31		77.9	78.0		5.30	5.30		6.01	6.01		4	
5/11/14	16:49	Fine	Middle	3.0	25.30	25.30	25.30	8.00	8.00	8.01	32.58	32.58	32.63	82.7	82.6	81.7	5.65	5.65	5.59	4.74	4.76	4.77	4	4.00
	16:51		Middle	3.0	25.30	25.30		8.01	8.01		32.68	32.68		81.4	80.2		5.56	5.48		4.78	4.80		4	
7/11/14	16:54	Cloudy	Middle	3.5	25.10	25.10	25.10	8.05	8.05	8.05	33.32	33.32	33.31	73.9	73.8	73.8	5.04	5.03	5.04	3.50	3.49	3.48	3	3.00
	16:56		Middle	3.5	25.10	25.10		8.05	8.05		33.30	33.30		73.5	74.1		5.02	5.06		3.47	3.47		3	
10/11/14	10:19	Fine	Middle	2.5	24.50	24.50	24.50	8.06	8.06	8.06	33.26	33.26	33.18	82.9	82.9	82.4	5.71	5.72	5.68	3.66	3.65	3.65	2	2.00
	10:21		Middle	2.5	24.50	24.50		8.06	8.06		33.10	33.10		82.3	81.3		5.68	5.61		3.65	3.65		2	
12/11/14	10:45	Fine	Middle	2.5	25.20	25.20	25.25	8.05	8.05	8.05	30.76	30.76	30.78	80.1	79.5	78.8	5.53	5.49	5.44	7.24	7.34	7.34	7	6.50
	10:47		Middle	2.5	25.30	25.30		8.04	8.04		30.79	30.79		78.0	77.4		5.39	5.34		7.36	7.40		6	
14/11/14	17:15	Fine	Middle	3.5	23.80	23.80	23.75	8.06	8.06	8.06	32.93	32.93	32.95	77.1	79.3	78.9	5.40	5.55	5.53	2.74	2.75	2.73	5	5.00
	17:17		Middle	3.5	23.70	23.70		8.06	8.06		32.96	32.96		79.3	80.0		5.56	5.60		2.72	2.70		<2	
17/11/14	13:40	Fine	Middle	3.5	25.30	25.30	25.50	8.10	8.10	8.11	32.82	32.82	32.94	94.0	92.3	92.9	6.37	6.25	6.29	2.97	2.82	2.83	4	3.50
	13:42		Middle	3.5	25.70	25.70		8.12	8.12		33.05	33.05		92.6	92.6		6.27	6.26		2.77	2.75		3	
19/11/14	15:15	Fine	Middle	3.0	23.90	23.90	23.90	8.15	8.15	8.16	32.97	32.97	32.98	89.9	89.9	89.8	6.28	6.29	6.28	2.59	2.64	2.67	3	2.50
	15:17		Middle	3.0	23.90	23.90		8.16	8.16		32.99	32.99		89.8	89.5		6.27	6.27		2.66	2.77		2	
21/11/14	16:26	Fine	Middle	3.0	24.10	24.10	24.15	7.87	7.87	7.94	32.03	32.03	32.03	94.4	93.7	93.8	6.57	6.57	6.54	3.79	3.79	3.81	3	3.50
	16:28		Middle	3.0	24.20	24.20		8.01	8.01		32.02	32.02		93.4	93.8		6.50	6.52		3.82	3.84		4	
24/11/14	8:50	Fine	Middle	3.0	23.50	23.50	23.50	8.21	8.21	8.21	32.85	32.85	32.85	88.7	89.5	89.1	6.24	6.30	6.26	2.49	2.47	2.47	4	3.50
	8:52		Middle	3.0	23.50	23.50		8.21	8.21		32.85	32.85		89.2	88.8		6.27	6.24		2.46	2.46		3	
26/11/14	10:15	Fine	Middle	3.0	23.70	23.70	23.75	8.19	8.19	8.20	32.70	32.70	32.70	87.0	89.1	87.5	6.10	6.24	6.13	4.86	4.84	4.81	4	4.50
	10:17		Middle	3.0	23.80	23.80		8.20	8.20		32.70	32.70		86.8	86.9		6.09	6.09		4.83	4.72		5	
28/11/14	10:14	Cloudy	Middle	3.0	23.70	23.70	23.70	8.12	8.12	8.13	32.75	32.75	32.75	83.5	85.1	85.0	5.86	5.97	5.97	3.67	3.58	3.51	4	4.50
	10:16		Middle	3.0	23.70	23.70		8.14	8.14		32.74	32.74		85.7	85.8		6.01	6.02		3.43	3.36		5	



**Water Monitoring Result at Culvert J - Reference Station
Mid-Ebb Tide**

Date	Time	Weather Condition	Sampling Depth		Water Temperature			pH			Salinity		DO Saturation		DO		Turbidity		Suspended Solids					
					°C		-		ppt		%		mg/L		NTU		mg/L							
					Value	Average	Value	Average	Value	Average	Value	Average	Value	Average	Value	Average	Value	Average	Value	Average				
3/11/14	9:56	Fine	Middle	3	25.00	25.00	25.00	7.98	7.96	7.97	33.24	33.24	32.74	72.1	72.3	72.3	4.97	4.98	4.98	9.20	9.26	9.27	7	7.00
	9:58		Middle	3	25.00	25.00		7.96	7.96		32.24	32.24		72.8	72.1		5.00	4.97		9.29	9.31		7	
5/11/14	10:50	Fine	Middle	3	25.50	25.50	25.50	8.02	8.02	8.03	24.28	24.28	24.32	80.7	79.4	79.6	5.76	5.67	5.68	4.65	4.60	4.62	3	2.50
	10:52		Middle	3	25.50	25.50		8.03	8.03		24.35	24.35		79.6	78.8		5.68	5.62		4.60	4.61		2	
7/11/14	11:10	Cloudy	Middle	3	25.00	25.00	25.00	8.18	8.18	8.18	33.42	33.42	33.44	83.2	83.7	83.2	5.79	5.77	5.73	3.31	3.33	3.36	3	3.00
	11:12		Middle	3	25.00	25.00		8.17	8.17		33.46	33.46		83.4	82.4		5.71	5.63		3.38	3.40		3	
10/11/14	4:46	Cloudy	Middle	3	24.02	24.02	24.02	8.14	8.15	8.14	26.47	26.47	26.47	70.4	69.0	68.5	5.09	4.99	4.95	24.29	23.84	22.67	6	6.00
	4:47		Middle	3	24.02	24.02		8.14	8.14		26.47	26.47		67.8	66.8		4.90	4.83		21.40	21.15		6	
12/11/14	5:20	Cloudy	Middle	3	24.35	24.35	24.31	8.18	8.18	8.14	23.19	23.19	23.20	82.6	81.7	81.4	6.06	5.99	5.97	22.96	23.79	23.40	7	6.50
	5:21		Middle	3	24.27	24.27		8.10	8.10		23.20	23.20		80.9	80.3		5.93	5.89		23.44	23.42		6	
14/11/14	5:14	Cloudy	Middle	3	23.11	23.11	23.07	8.40	8.40	8.39	25.75	25.75	25.74	88.4	88.3	88.2	6.54	6.53	6.53	6.07	5.59	5.77	3	3.00
	5:15		Middle	3	23.02	23.02		8.37	8.37		25.72	25.72		88.1	88.0		6.52	6.51		5.56	5.86		3	
17/11/14	10:15	Fine	Middle	3	24.70	24.70	24.80	8.14	8.14	8.12	29.77	29.77	29.79	65.3	66.0	66.9	4.57	4.66	4.69	8.59	8.52	8.53	5	5.00
	10:17		Middle	3	24.90	24.90		8.10	8.10		29.80	29.80		68.5	67.7		4.79	4.75		8.51	8.49		5	
19/11/14	10:35	Fine	Middle	3	23.50	23.50	23.50	8.16	8.16	8.18	32.51	32.51	32.76	90.2	90.7	90.4	6.34	6.37	6.35	2.85	2.83	2.82	5	5.00
	10:37		Middle	3	23.50	23.50		8.19	8.19		33.01	33.01		89.9	90.7		6.32	6.37		2.82	2.77		5	
21/11/14	11:56	Fine	Middle	3	23.80	23.80	23.80	8.19	8.19	8.19	32.51	32.51	32.52	91.6	91.5	91.9	6.42	6.42	6.44	3.42	3.45	3.43	<2	2.00
	11:57		Middle	3	23.80	23.80		8.19	8.19		32.52	32.52		92.3	92.0		6.47	6.45		3.46	3.37		2	
24/11/14	4:05	Fine	Middle	3	23.26	23.26	23.23	8.23	8.23	8.22	27.10	27.10	27.12	98.2	98.0	97.8	7.18	7.16	7.15	6.51	6.08	6.22	9	8.00
	4:06		Middle	3	23.20	23.20		8.20	8.20		27.13	27.13		97.6	97.3		7.14	7.12		6.19	6.11		7	
26/11/14	5:24	Cloudy	Middle	3	22.47	22.47	22.47	7.80	7.80	7.80	24.48	24.48	24.49	63.5	63.7	64.6	4.61	4.62	4.69	25.44	24.96	25.30	20	20.00
	5:25		Middle	3	22.47	22.47		7.79	7.79		24.49	24.49		65.5	65.5		4.75	4.76		25.38	25.40		20	
28/11/14	5:08	Cloudy	Middle	3	23.16	23.16	23.16	8.08	8.08	8.08	26.45	26.44	26.44	76.5	75.5	75.2	5.62	5.55	5.52	8.81	9.40	8.87	6	6.50
	5:09		Middle	3	23.16	23.16		8.08	8.08		26.43	26.43		74.7	74.0		5.48	5.43		8.55	8.71		7	



**Water Monitoring Result at Culvert J - Reference Station
Mid-Flood Tide**

Date	Time	Weather Condition	Sampling Depth		Water Temperature			pH			Salinity			DO Saturation		DO		Turbidity			Suspended Solids			
					°C			-			ppt			%		mg/L		NTU			mg/L			
			m	Value	Average	Value	Average	Value	Average	Value	Average	Value	Average	Value	Average	Value	Average	Value	Average	Value	Average	Value	Average	
1/12/14	14:10	Cloudy	Middle	3.5	22.50	22.50	22.45	8.13	8.13	8.13	32.10	32.10	32.10	81.0	80.6	80.2	5.83	5.80	5.77	4.15	4.14	4.14	5	4.50
	14:12		Middle	3.5	22.40	22.40		8.12	8.12		32.10	32.10		80.0	79.1		5.76	5.69		4.14	4.14		4	
3/12/14	15:01	Cloudy	Middle	3.0	21.50	21.50	21.45	8.15	8.15	8.16	32.08	32.08	32.09	78.5	80.2	80.0	5.75	5.83	5.85	4.01	3.91	3.91	4	4.00
	15:03		Middle	3.0	21.40	21.40		8.16	8.16		32.10	32.10		80.6	80.5		5.91	5.90		3.88	3.83		4	
5/12/14	16:15	Fine	Middle	3.0	20.60	20.60	20.60	8.09	8.09	8.07	28.53	28.53	28.54	71.2	72.3	71.6	5.41	5.49	5.44	10.89	10.91	10.90	6	6.50
	16:17		Middle	3.0	20.60	20.60		8.04	8.04		28.54	28.54		70.8	72.2		5.38	5.49		10.89	10.91		7	
8/12/14	10:24	Fine	Middle	3.0	20.30	20.30	20.25	8.16	8.16	8.14	28.51	28.51	28.51	72.9	73.3	72.7	5.58	5.61	5.56	9.86	9.86	9.56	7	7.00
	10:26		Middle	3.0	20.20	20.20		8.11	8.11		28.50	28.50		72.8	71.7		5.57	5.49		9.17	9.34		7	
10/12/14	8:35	Cloudy	Middle	2.5	20.40	20.40	20.40	8.20	8.20	8.20	32.15	32.15	32.15	88.9	89.4	88.9	6.64	6.68	6.64	4.56	4.30	4.50	6	5.50
	8:37		Middle	2.5	20.40	20.40		8.20	8.20		32.15	32.15		88.6	88.7		6.62	6.62		4.53	4.62		5	
12/12/14	10:50	Fine	Middle	2.5	19.80	19.80	19.50	8.19	8.19	8.19	31.93	31.93	31.94	83.3	84.3	84.1	6.38	6.44	6.43	3.59	3.61	3.63	3	3.00
	10:52		Middle	2.5	19.20	19.20		8.19	8.19		31.94	31.94		84.0	84.6		6.42	6.47		3.63	3.67		3	
15/12/14	12:50	Fine	Middle	3.5	20.30	20.30	20.15	8.19	8.19	8.19	31.84	31.84	31.86	81.6	81.6	81.6	6.16	6.16	6.17	10.31	10.34	10.35	2	2.00
	12:52		Middle	3.5	20.00	20.00		8.19	8.19		31.88	31.88		81.2	82.1		6.15	6.21		10.37	10.37		<2	
17/12/14	11:56	Fine	Middle	2.5	18.00	18.00	18.00	8.16	8.16	8.13	28.02	28.02	28.03	75.6	77.4	76.9	6.06	6.21	6.18	8.57	8.58	8.61	7	6.50
	11:58		Middle	2.5	18.00	18.00		8.10	8.10		28.03	28.03		77.3	77.4		6.21	6.22		8.62	8.67		6	
19/12/14	16:14	Cloudy	Middle	2.5	17.70	17.70	17.70	8.28	8.28	8.28	31.78	31.78	31.79	86.6	86.2	86.1	6.82	6.78	6.78	3.82	3.63	3.74	3	3.00
	16:16		Middle	2.5	17.70	17.70		8.28	8.28		31.79	31.79		86.0	85.7		6.77	6.75		3.76	3.76		3	
22/12/14	8:35	Fine	Middle	3.0	16.70	16.70	16.65	8.28	8.28	8.28	31.71	31.71	31.72	85.9	86.3	85.7	6.90	6.94	6.89	3.67	3.73	3.74	<2	<2
	8:37		Middle	3.0	16.60	16.60		8.28	8.28		31.72	31.72		85.8	84.8		6.90	6.83		3.76	3.78		<2	
24/12/14	10:45	Fine	Middle	2.5	18.50	18.50	18.55	8.23	8.23	8.23	31.66	31.66	31.66	84.7	85.5	85.3	6.56	6.63	6.61	3.05	3.04	3.04	4	3.50
	10:47		Middle	2.5	18.60	18.60		8.23	8.23		31.65	31.65		85.5	85.3		6.63	6.61		3.04	3.04		3	
26/12/14	7:41	Cloudy	Middle	2.5	17.50	17.50	17.50	8.06	8.06	8.06	29.39	29.39	29.39	72.5	72.4	72.2	5.82	5.81	5.80	4.83	4.87	4.90	4	4.50
	7:42		Middle	2.5	17.50	17.50		8.06	8.06		29.39	29.39		71.9	72.1		5.77	5.78		4.94	4.97		5	
29/12/14	14:00	Fine	Middle	2.5	18.50	18.50	18.55	8.18	8.18	8.18	31.57	31.57	31.57	84.8	85.2	85.0	6.57	6.60	6.58	2.94	2.94	2.94	3	2.50
	14:02		Middle	2.5	18.60	18.60		8.18	8.18		31.57	31.57		85.0	84.9		6.58	6.58		2.95	2.92		2	
31/12/14	11:45	Fine	Middle	2.5	18.00	18.00	18.00	8.12	8.12	8.12	31.03	31.03	31.03	77.8	77.0	77.1	6.12	6.06	6.07	6.73	6.87	6.81	7	6.00
	11:47		Middle	2.5	18.00	18.00		8.11	8.11		31.03	31.03		76.9	76.5		6.09	6.02		6.84	6.79		5	



**Water Monitoring Result at Culvert J - Reference Station
Mid-Ebb Tide**

Date	Time	Weather Condition	Sampling Depth		Water Temperature			pH			Salinity		DO Saturation		DO		Turbidity		Suspended Solids					
					°C		-		ppt		%		mg/L		NTU		mg/L							
					Value	Average	Value	Average	Value	Average	Value	Average	Value	Average	Value	Average	Value	Average	Value	Average				
1/12/14	21:43	Cloudy	Middle	3	22.40	22.40	22.40	7.82	7.82	7.81	29.57	29.57	29.56	39.6	39.9	40.2	2.60	2.92	2.87	10.29	10.49	10.40	6	5.50
	21:44		Middle	3	22.40	22.40		7.79	7.80		29.54	29.54		40.5	40.7		2.97	2.98		10.57	10.24		5	
3/12/14	10:11	Cloudy	Middle	3	21.70	21.70	21.65	8.15	8.15	8.14	30.77	30.77	30.77	81.2	80.7	81.3	5.97	5.94	5.99	3.22	3.21	3.22	4	3.50
	10:12		Middle	3	21.60	21.60		8.12	8.12		30.77	30.77		81.5	81.9		6.00	6.03		3.22	3.23		3	
5/12/14	10:45	Cloudy	Middle	3	20.20	20.20	20.15	8.21	8.21	8.21	32.04	32.04	32.04	81.7	82.1	82.1	6.13	6.17	6.17	5.22	5.24	5.24	4	3.50
	10:47		Middle	3	20.10	20.10		8.21	8.21		32.04	32.04		82.5	82.1		6.20	6.16		5.25	5.25		3	
8/12/14	1:45	Cloudy	Middle	3	20.10	20.10	20.10	8.16	8.16	8.16	25.57	25.57	25.57	62.3	62.9	62.8	4.87	4.92	4.91	10.26	10.49	10.46	8	7.50
	1:46		Middle	3	20.10	20.10		8.15	8.15		25.57	25.57		62.5	63.3		4.89	4.96		10.51	10.56		7	
10/12/14	5:23	Cloudy	Middle	3	20.40	20.60	20.55	7.85	7.85	7.85	30.82	30.82	30.85	79.8	79.7	78.8	5.98	5.98	5.87	5.56	5.24	5.54	5	5.50
	5:24		Middle	3	20.60	20.60		7.85	7.85		30.87	30.87		77.5	78.3		5.82	5.68		5.37	5.99		6	
12/12/14	3:40	Cloudy	Middle	3	20.20	20.20	20.15	8.06	8.06	8.06	27.64	27.64	27.64	68.7	69.5	69.1	5.29	5.36	5.33	11.37	10.91	11.36	6	5.50
	3:41		Middle	3	20.10	20.10		8.06	8.06		27.63	27.63		69.3	68.9		5.35	5.31		11.44	11.70		5	
15/12/14	7:04	Cloudy	Middle	3	19.30	19.30	19.25	7.96	7.96	7.94	27.56	27.56	27.56	61.5	61.5	61.5	4.83	4.83	4.83	4.03	4.01	3.87	3	2.50
	7:05		Middle	3	19.20	19.20		7.92	7.91		27.55	27.55		61.2	61.7		4.81	4.84		3.73	3.70		2	
17/12/14	21:05	Fine	Middle	3	16.50	16.50	16.50	7.79	7.79	7.78	28.08	28.08	28.08	76.9	77.3	77.1	6.36	6.39	6.36	10.12	10.00	9.98	6	5.50
	21:06		Middle	3	16.50	16.50		7.77	7.77		28.08	28.08		77.3	76.8		6.37	6.33		9.92	9.88		5	
19/12/14	21:25	Cloudy	Middle	3	13.40	13.40	13.40	7.98	7.98	7.98	23.58	23.60	23.60	40.2	41.5	41.6	3.35	3.46	3.47	10.58	11.54	10.85	18	18.00
	21:26		Middle	3	13.40	13.40		7.97	7.97		23.61	23.61		42.1	42.5		3.51	3.54		10.52	10.74		18	
22/12/14	2:16	Cloudy	Middle	3	16.20	16.20	16.15	8.03	8.03	8.03	28.40	28.51	29.01	80.1	80.3	80.3	6.58	6.60	6.60	9.80	9.73	9.67	5	4.00
	2:17		Middle	3	16.10	16.10		8.03	8.03		29.55	29.56		80.2	80.4		6.59	6.61		9.61	9.54		3	
24/12/14	3:11	Cloudy	Middle	3	17.80	17.80	17.80	7.85	7.85	7.85	27.62	27.65	27.64	46.0	46.5	46.3	3.70	3.75	3.73	31.70	33.84	32.26	10	9.50
	3:12		Middle	3	17.80	17.80		7.84	7.84		27.65	27.65		46.4	46.2		3.75	3.72		32.02	31.46		9	
26/12/14	1:30	Cloudy	Middle	3	18.10	18.10	18.10	7.98	7.98	7.99	28.25	28.25	28.26	77.5	74.9	76.3	6.19	5.98	6.09	6.94	6.68	6.71	2	2.00
	1:31		Middle	3	18.10	18.10		7.99	7.99		28.26	28.26		75.9	76.7		6.06	6.12		6.61	6.59		2	
29/12/14	5:14	Cloudy	Middle	3	15.50	15.50	15.50	7.88	7.88	7.88	28.57	28.57	28.58	69.5	70.5	70.6	5.83	5.92	5.92	8.57	8.50	8.38	3	3.00
	5:15		Middle	3	15.50	15.50		7.88	7.88		28.59	28.59		71.0	71.2		5.96	5.97		8.18	8.28		3	
31/12/14	18:52	Fine	Middle	3	17.80	17.80	17.80	8.12	8.12	8.13	31.59	31.59	31.58	82.6	81.5	79.0	6.49	6.40	6.36	2.94	2.94	2.96	2	2.00
	18:54		Middle	3	17.80	17.80		8.13	8.13		31.56	31.56		80.6	71.4		6.30	6.24		2.96	2.99		2	



**Water Monitoring Result at Culvert J - Reference Station
Mid-Flood Tide**

Date	Time	Weather Condition	Sampling Depth		Water Temperature			pH			Salinity		DO Saturation		DO		Turbidity		Suspended Solids					
					°C		-		ppt		%		mg/L		NTU		mg/L							
			m	Value	Average	Value	Average	Value	Average	Value	Average	Value	Average	Value	Average	Value	Average	Value	Average					
3/1/15	16:04	Fine	Middle	3.0	17.70	17.70	17.70	8.21	8.21	8.21	31.37	31.37	31.36	86.4	85.5	84.5	6.81	6.74	6.66	2.84	2.82	2.83	3	4.00
	16:06		Middle	3.0	17.70	17.70		8.21	8.21		31.35	31.35		83.8	82.1		6.61	6.47		2.82	2.82		5	
6/1/15	8:01	Fine	Middle	3.0	18.40	18.40	18.40	8.21	8.21	8.21	31.55	31.55	31.55	87.0	86.5	85.3	6.77	6.72	6.64	3.89	3.80	3.75	4	4.50
	8:03		Middle	3.0	18.40	18.40		8.21	8.21		31.55	31.55		84.8	83.0		6.60	6.46		3.66	3.63		5	
8/1/15	9:35	Fine	Middle	3.0	17.20	17.20	17.20	8.16	8.16	8.16	31.40	31.40	31.41	82.2	82.7	82.7	6.55	6.58	6.59	5.50	5.48	5.46	9	8.50
	9:37		Middle	3.0	17.20	17.20		8.16	8.16		31.41	31.41		83.0	82.9		6.61	6.61		5.43	5.41		8	
10/1/15	12:15	Fine	Middle	3.0	17.70	17.70	17.70	8.15	8.15	8.15	31.28	31.28	31.28	81.9	82.3	82.0	6.46	6.50	6.48	3.27	3.28	3.28	4	3.50
	12:17		Middle	3.0	17.70	17.70		8.15	8.15		31.28	31.28		82.3	81.6		6.50	6.44		3.28	3.28		3	
12/1/15	11:20	Fine	Middle	3.0	17.00	17.00	16.90	8.13	8.13	8.13	31.26	31.26	31.27	77.0	78.7	78.3	6.18	6.32	6.29	3.70	3.67	3.67	7	6.50
	11:22		Middle	3.0	16.80	16.80		8.13	8.13		31.27	31.27		78.7	78.7		6.32	6.32		3.66	3.65		6	
14/1/15	11:08	Fine	Middle	2.5	16.90	16.90	16.85	7.79	7.79	7.80	31.35	31.35	31.33	78.3	78.7	78.8	6.28	6.32	6.33	4.77	4.77	4.80	3	3.50
	11:10		Middle	2.5	16.80	16.80		7.80	7.80		31.30	31.30		79.1	79.2		6.35	6.36		4.79	4.85		4	
16/1/15	14:00	Fine	Middle	3.0	18.10	18.10	18.15	8.13	8.13	8.13	30.91	30.91	30.91	88.3	88.7	88.5	6.92	6.95	6.93	5.44	5.42	5.49	5	5.00
	14:02		Middle	3.0	18.20	18.20		8.13	8.13		30.90	30.90		88.6	88.3		6.94	6.92		5.55	5.56		5	
19/1/15	15:04	Fine	Middle	3.0	17.50	17.50	17.65	8.03	8.03	8.03	31.05	31.05	31.05	88.1	87.6	87.5	6.98	6.93	6.93	3.95	3.91	3.95	5	5.50
	15:06		Middle	3.0	17.80	17.80		8.03	8.03		31.04	31.04		87.3	87.0		6.91	6.88		3.97	3.98		6	
21/1/15	17:18	Fine	Middle	3.5	17.40	17.40	17.50	8.03	8.03	8.03	31.08	31.08	31.07	78.0	78.2	78.0	6.20	6.21	6.19	5.71	5.58	5.63	7	7.00
	17:20		Middle	3.5	17.60	17.60		8.03	8.03		31.06	31.06		77.6	78.0		6.16	6.19		5.61	5.62		7	
23/1/15	8:38	Fine	Middle	3.0	16.40	16.40	16.40	8.07	8.07	8.07	31.06	31.06	31.06	78.4	79.2	78.9	6.36	6.43	6.40	6.65	6.78	6.61	5	5.50
	8:40		Middle	3.0	16.40	16.40		8.07	8.07		31.05	31.05		78.9	78.9		6.40	6.40		6.59	6.40		6	
26/1/15	11:30	Fine	Middle	3.0	18.50	18.50	18.55	8.02	8.02	8.02	30.99	30.99	30.99	79.1	80.5	79.9	6.15	6.26	6.21	5.91	6.09	6.06	8	8.00
	11:32		Middle	3.0	18.60	18.60		8.02	8.02		30.99	30.99		80.0	79.9		6.22	6.21		6.12	6.12		8	
28/1/15	14:32	Fine	Middle	3.5	17.20	17.20	17.25	8.04	8.04	8.04	30.75	30.75	30.74	69.7	69.4	68.7	5.57	5.55	5.49	5.15	5.17	5.18	5	4.50
	14:34		Middle	3.5	17.30	17.30		8.04	8.04		30.72	30.72		68.0	67.6		5.43	5.40		5.19	5.19		4	
30/1/15	14:10	Fine	Middle	3.0	18.10	18.10	18.20	8.07	8.07	8.07	30.87	30.87	30.87	81.3	82.1	81.9	6.37	6.43	6.41	3.89	3.83	3.79	3	3.50
	14:12		Middle	3.0	18.30	18.30		8.07	8.07		30.86	30.86		82.1	82.0		6.43	6.42		3.75	3.69		4	

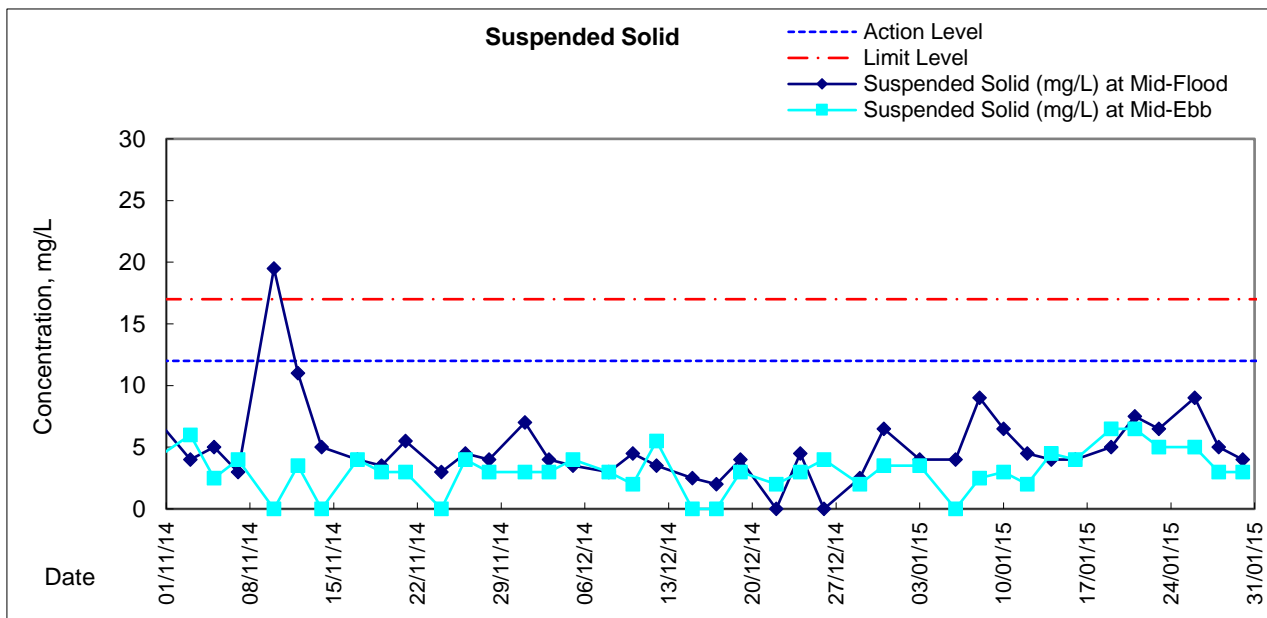
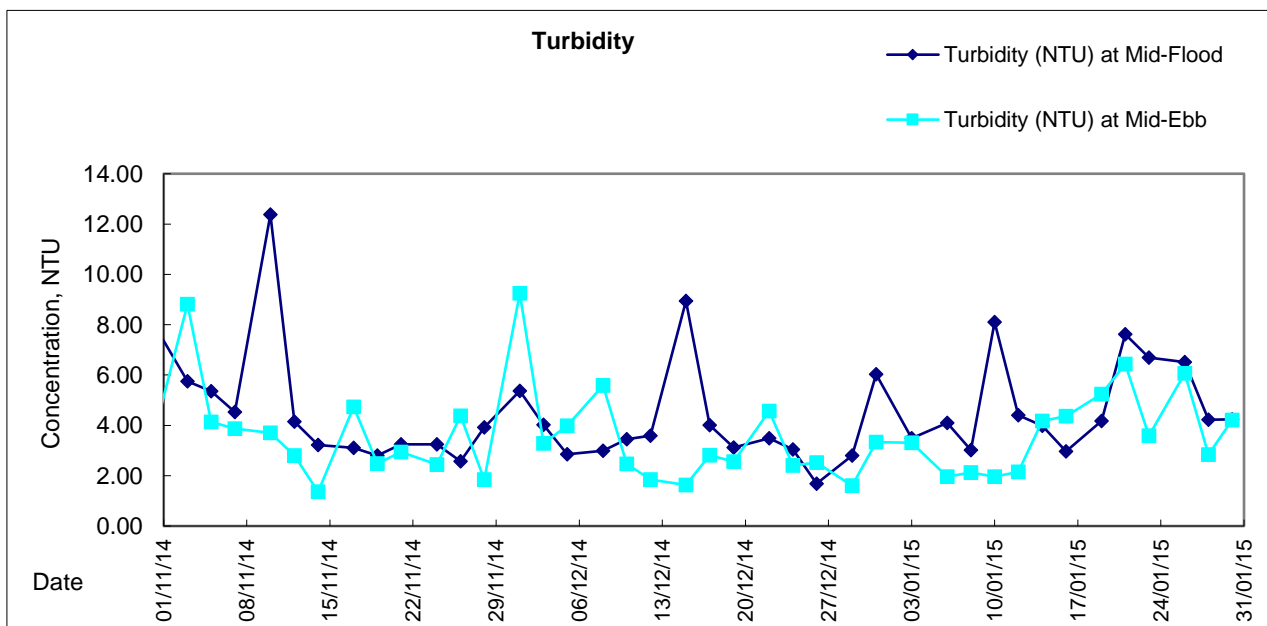
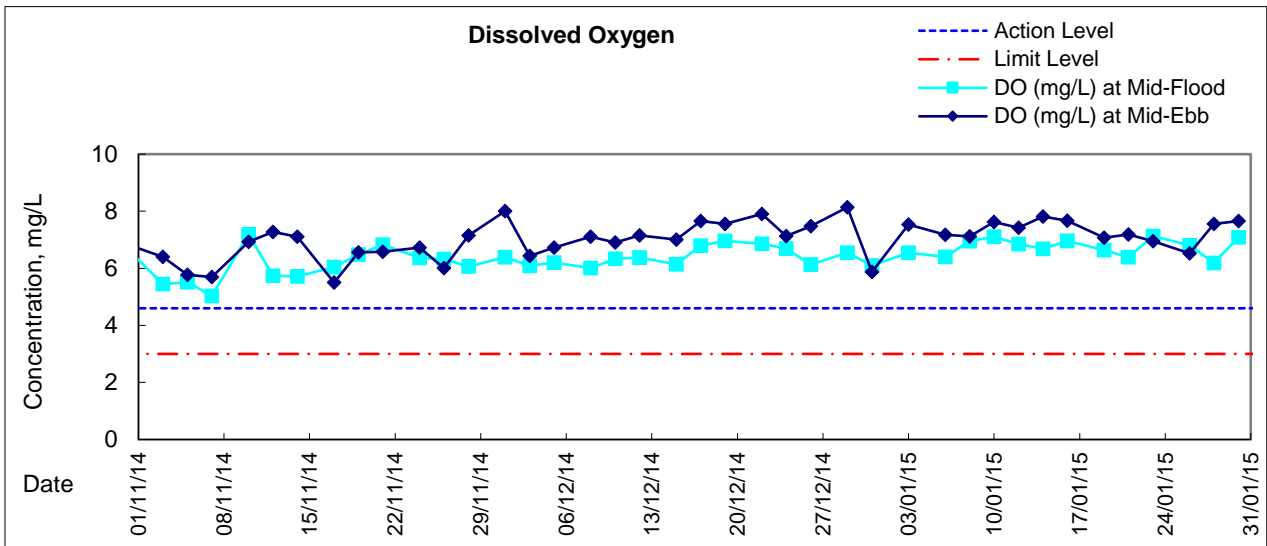


**Water Monitoring Result at Culvert J - Reference Station
Mid-Ebb Tide**

Date	Time	Weather Condition	Sampling Depth		Water Temperature		pH			Salinity		DO Saturation		DO		Turbidity		Suspended Solids						
					°C		-			ppt		%		mg/L		NTU		mg/L						
					Value	Average	Value	Average	Value	Average	Value	Average	Value	Average	Value	Average	Value	Average	Value	Average				
3/1/15	1:55	Cloudy	Middle	3	17.10	17.10	17.10	7.87	7.87	7.88	31.43	31.43	31.44	86.0	86.2	87.1	6.86	6.89	6.96	2.52	2.39	2.40	2	3.00
	1:56		Middle	3	17.10	17.10		7.89	7.89		31.44	31.44		87.8	88.4		7.03	7.05		2.34	2.36		4	
6/1/15	2:58	Fine	Middle	3	18.60	18.60	18.60	7.79	7.79	7.78	27.53	27.53	27.54	53.1	52.7	52.7	4.21	4.18	4.18	14.70	14.68	14.63	9	9.00
	2:59		Middle	3	18.60	18.60		7.77	7.77		27.54	27.54		52.6	52.5		4.17	4.17		14.65	14.49		9	
8/1/15	2:04	Cloudy	Middle	3	17.40	17.40	17.35	7.85	7.85	7.85	28.65	28.66	28.66	65.7	66.6	66.4	5.31	5.38	5.37	5.42	5.54	5.41	2	2.50
	2:05		Middle	3	17.30	17.30		7.84	7.84		28.66	28.66		66.4	66.9		5.36	5.41		5.25	5.43		3	
10/1/15	3:11	Cloudy	Middle	3	16.80	16.80	16.80	7.93	7.93	7.93	27.45	27.45	27.39	62.5	63.4	63.5	5.14	5.22	5.23	7.31	7.24	7.19	4	4.50
	3:12		Middle	3	16.80	16.80		7.92	7.92		27.33	27.33		64.1	64.0		5.28	5.27		7.03	7.17		5	
12/1/15	4:18	Cloudy	Middle	3	17.30	17.30	17.25	7.89	7.89	7.89	28.12	28.12	28.12	65.7	65.6	65.6	5.33	5.33	5.32	5.36	5.37	5.29	6	5.50
	4:19		Middle	3	17.20	17.20		7.88	7.89		28.12	28.12		65.4	65.6		5.31	5.32		5.34	5.10		5	
14/1/15	19:05	Fine	Middle	3	15.70	15.70	15.70	8.01	8.01	8.00	25.22	25.22	25.22	63.1	62.9	62.4	5.72	5.36	5.41	16.04	15.88	15.92	5	5.00
	19:06		Middle	3	15.70	15.70		8.00	7.99		25.21	25.21		61.7	61.9		5.33	5.23		15.84	15.93		5	
16/1/15	19:40	Cloudy	Middle	3	17.40	17.40	17.40	7.89	7.89	7.89	27.15	27.15	27.12	76.3	76.7	77.2	6.21	6.23	6.29	14.50	14.43	14.43	5	5.50
	19:41		Middle	3	17.40	17.40		7.88	7.88		27.08	27.08		77.4	78.4		6.34	6.38		14.47	14.33		6	
19/1/15	1:54	Cloudy	Middle	3	15.80	15.80	15.80	7.96	7.96	7.96	30.73	30.74	30.74	81.5	81.7	82.6	6.70	6.71	6.79	6.62	6.82	6.57	5	5.50
	1:55		Middle	3	15.80	15.80		7.96	7.96		30.74	30.74		84.6	82.6		6.98	6.76		6.55	6.29		6	
21/1/15	11:40	Fine	Middle	3	17.50	17.50	17.50	8.07	8.07	8.07	31.17	31.17	31.17	79.0	80.0	79.8	6.28	6.34	6.32	3.29	3.29	3.29	6	5.50
	11:42		Middle	3	17.50	17.50		8.07	8.07		31.17	31.17		80.4	79.7		6.36	6.30		3.29	3.29		5	
23/1/15	14:12	Fine	Middle	4	17.90	17.90	18.00	8.01	8.01	8.01	31.07	31.07	31.13	74.1	73.7	73.4	5.83	5.80	5.78	4.48	4.48	4.39	7	6.00
	14:14		Middle	4	18.10	18.10		8.01	8.01		31.19	31.19		73.0	72.9		5.74	5.73		4.30	4.31		5	
26/1/15	16:15	Fine	Middle	3	18.70	18.70	18.80	7.95	7.95	7.95	30.49	30.49	30.49	76.3	75.4	75.5	5.92	5.87	5.88	4.71	4.70	4.78	5	4.50
	16:17		Middle	3	18.90	18.90		7.95	7.95		30.49	30.49		75.3	75.0		5.84	5.89		4.90	4.81		4	
28/1/15	20:13	Cloudy	Middle	3	17.20	17.20	17.20	7.91	7.91	7.90	25.55	25.55	25.54	29.3	29.5	29.4	2.37	2.39	2.38	7.95	7.86	7.88	11	11.00
	20:14		Middle	3	17.20	17.20		7.88	7.88		25.52	25.52		29.4	29.3		2.38	2.37		7.88	7.82		11	
30/1/15	21:52	Cloudy	Middle	3	17.10	17.10	17.10	8.02	8.02	8.02	30.15	30.15	23.39	83.2	83.3	83.0	6.69	6.70	6.67	6.75	6.61	6.68	4	4.00
	21:53		Middle	3	17.10	17.10		8.02	8.02		30.13	3.13		83.0	82.4		6.67	6.62		6.63	6.71		4	



Graphic Presentation of Water Quality Result of M5B - Central Cooling Water Intake Groups





Graphic Presentation of Water Quality Result of Culvert J - Reference Station

